

# Promoting Community Health Outcomes Through Data Sharing



Emily Hartmann

Juan Nanez, MPH, BSN, RN

*Wednesday October 16, 2024*



# Learning Objectives

- 1 Evaluate the value of community-driven processes for establishing data sharing models across sectors.
- 2 Outline a model and value proposition for developing a health data utility model at the regional level.

# Regional Data Sharing

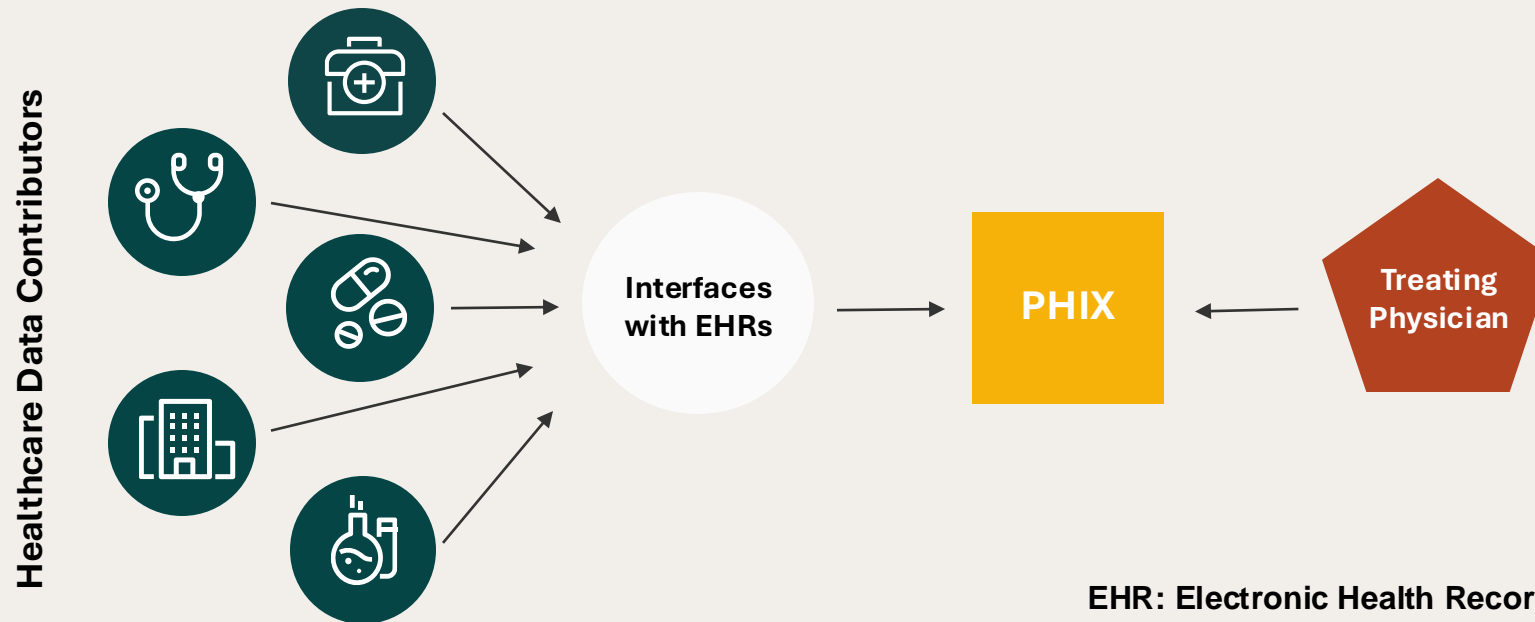
PHIX is based in El Paso and serves hospitals, physicians, and patients in **West Texas** and **Southern New Mexico**.

- Our region is geographically isolated from other large cities.
- We serve a large Hispanic population (El Paso - 82.9%)
- We serve patients who seek health care across borders including the US-Mexico border.



# Introduction to PHIX

- PHIX is a 501(c)3 non-profit founded by El Paso, TX health leaders in 2010 with the mission to improve health through collaboration and data technology.
- Using health information exchange (HIE) technology, PHIX facilitates health and social services data sharing to support patient care.



# PHIX Governance Committees



**Technology**



**Privacy and Security**



**Data Use and Analysis**



**Governance**



**Strategic Planning**



**Quality Reporting**



**Syndromic Surveillance**



**Growth**



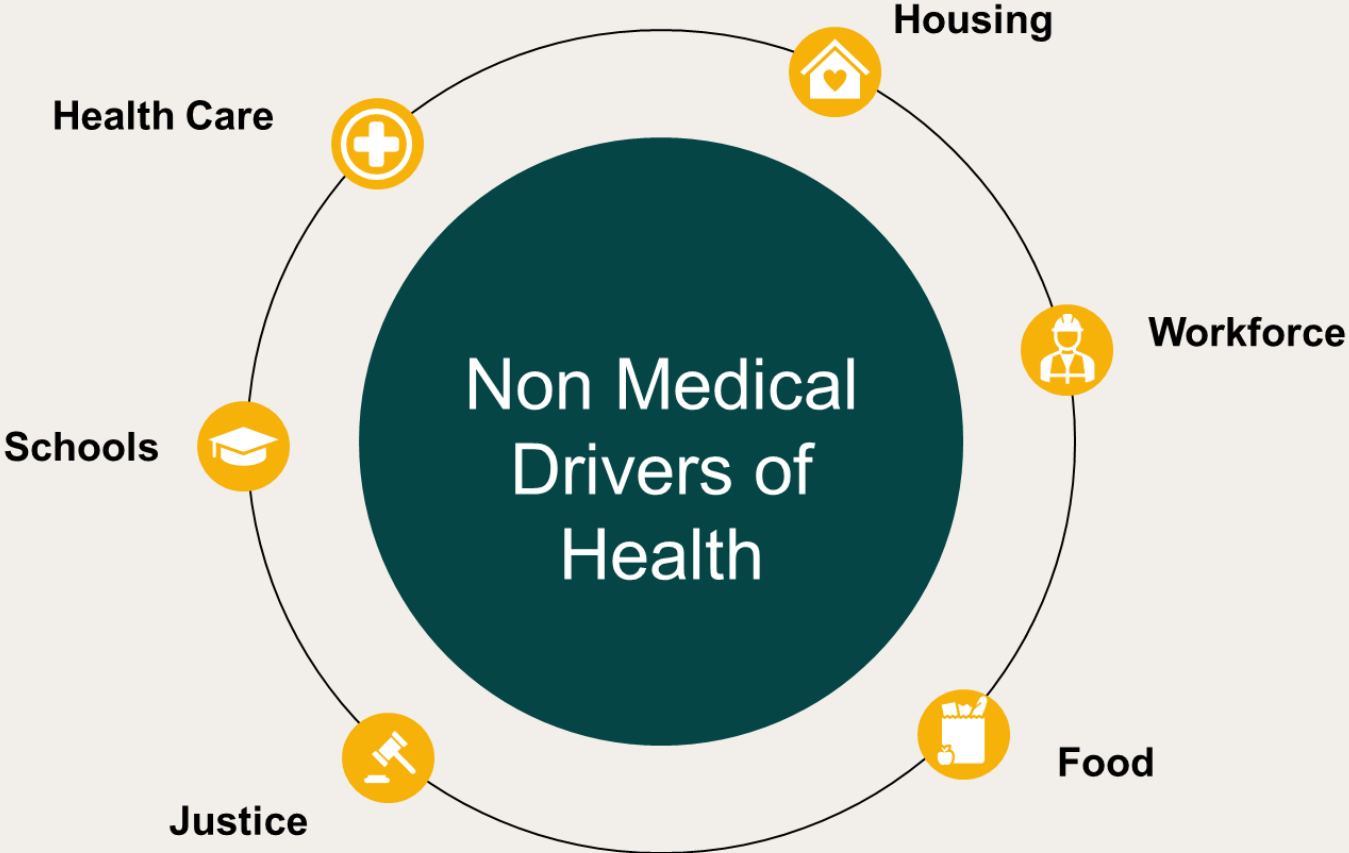
**Research**



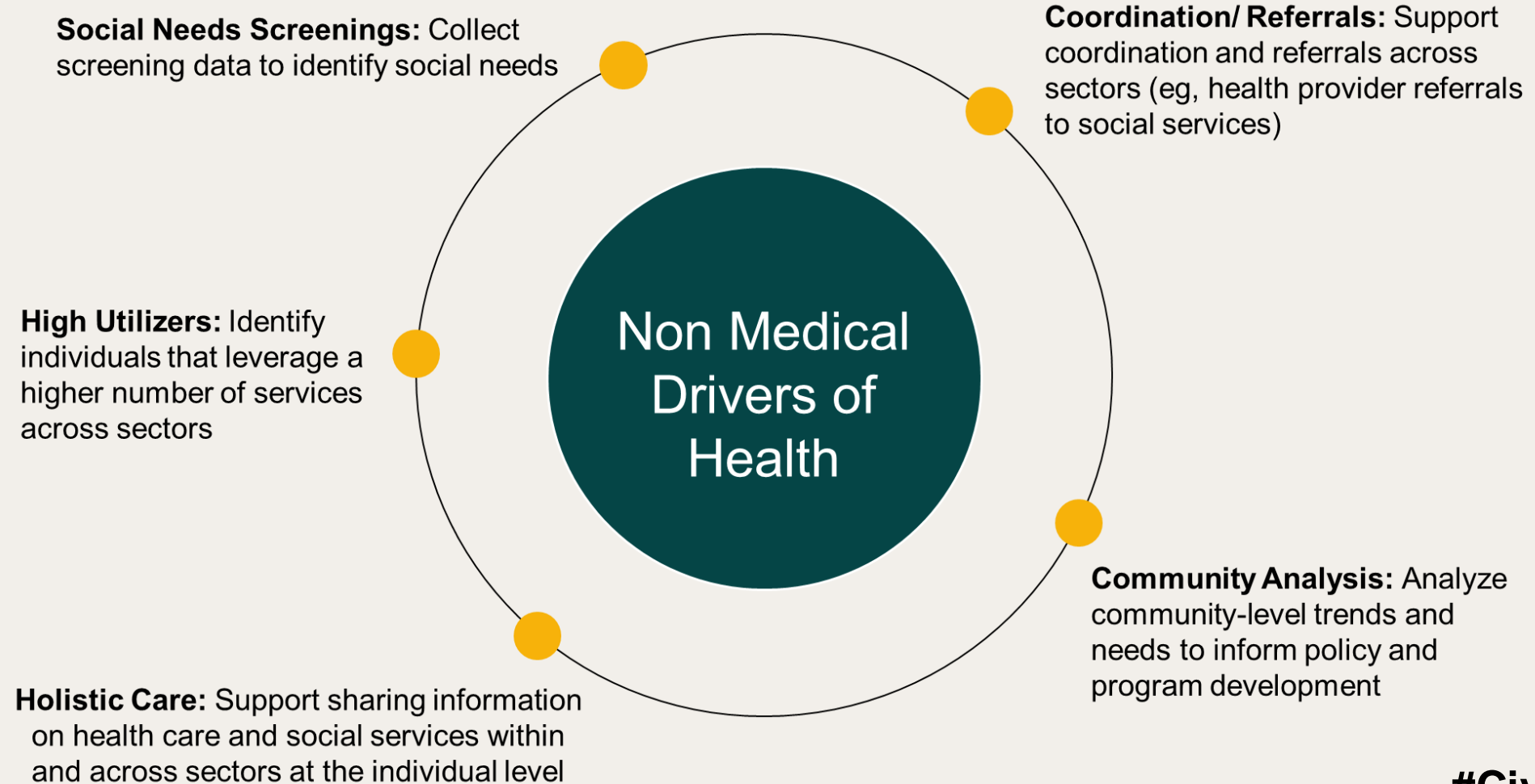
**Non-Medical Drivers of Health**

# Non-Medical Drivers of Health Committee

PHIX's Non-Medical Drivers of Health (NMDOH) Committee provides strategic guidance and feedback to PHIX on how to approach non-medical drivers of health



# NMDOH Committee Goals



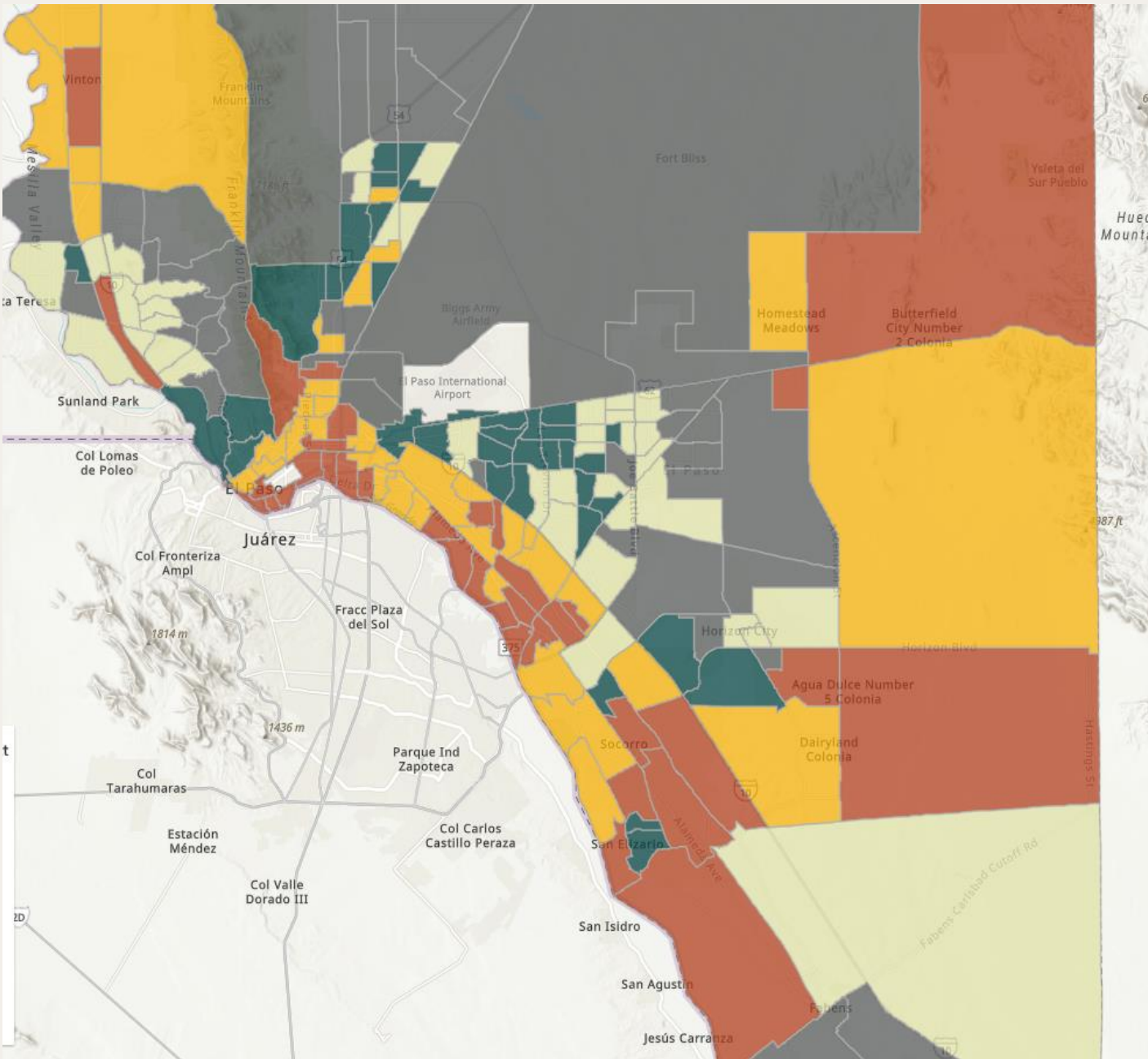
# Goal 1: Community Analysis

- **Goal:** Analyze community-level trends and needs to inform policy and program development.
- **Initiative:** Enhance clinical dashboards with non-medical drivers of health data to support understanding key health trends.



# Case Example: Type II Diabetes

Type II Diabetes Prevalence by  
Census Tract  
El Paso County, 2021-2023



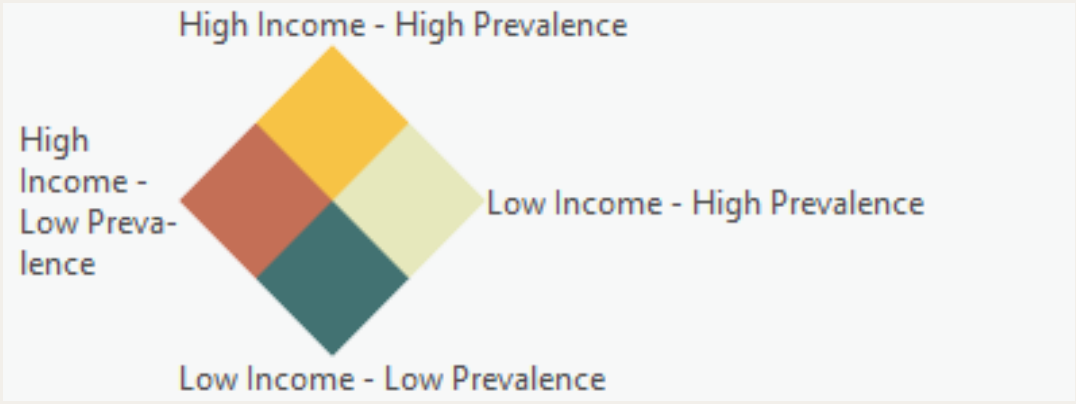
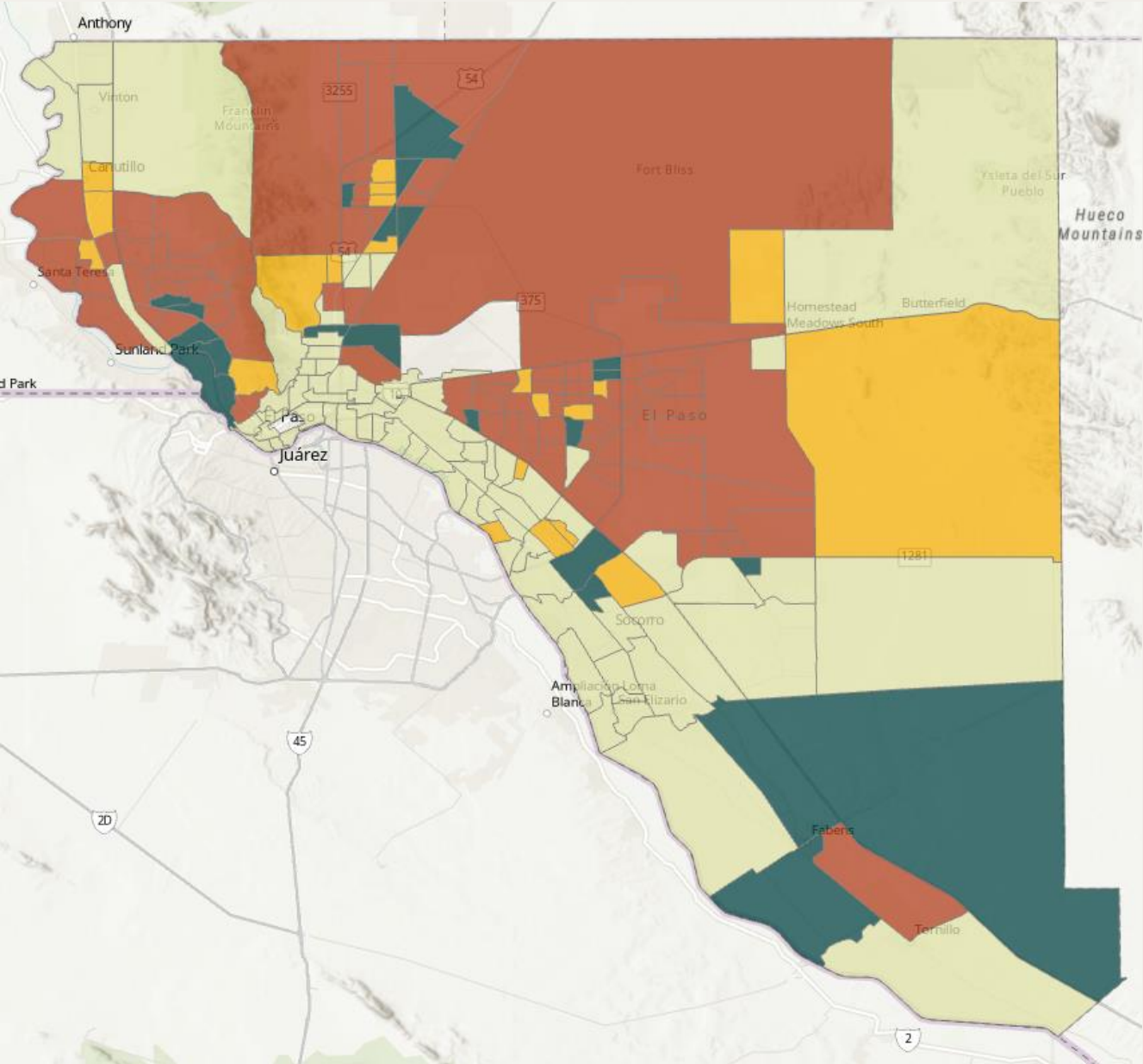
Type II Diabetes Prevalence by Tract

Type II Diabetes Patients divided  
by Tract Population

- > 0.127 - 0.56
- > 0.103 - 0.127
- > 0.079 - 0.103
- > 0.058 - 0.079
- 0.003 - 0.058

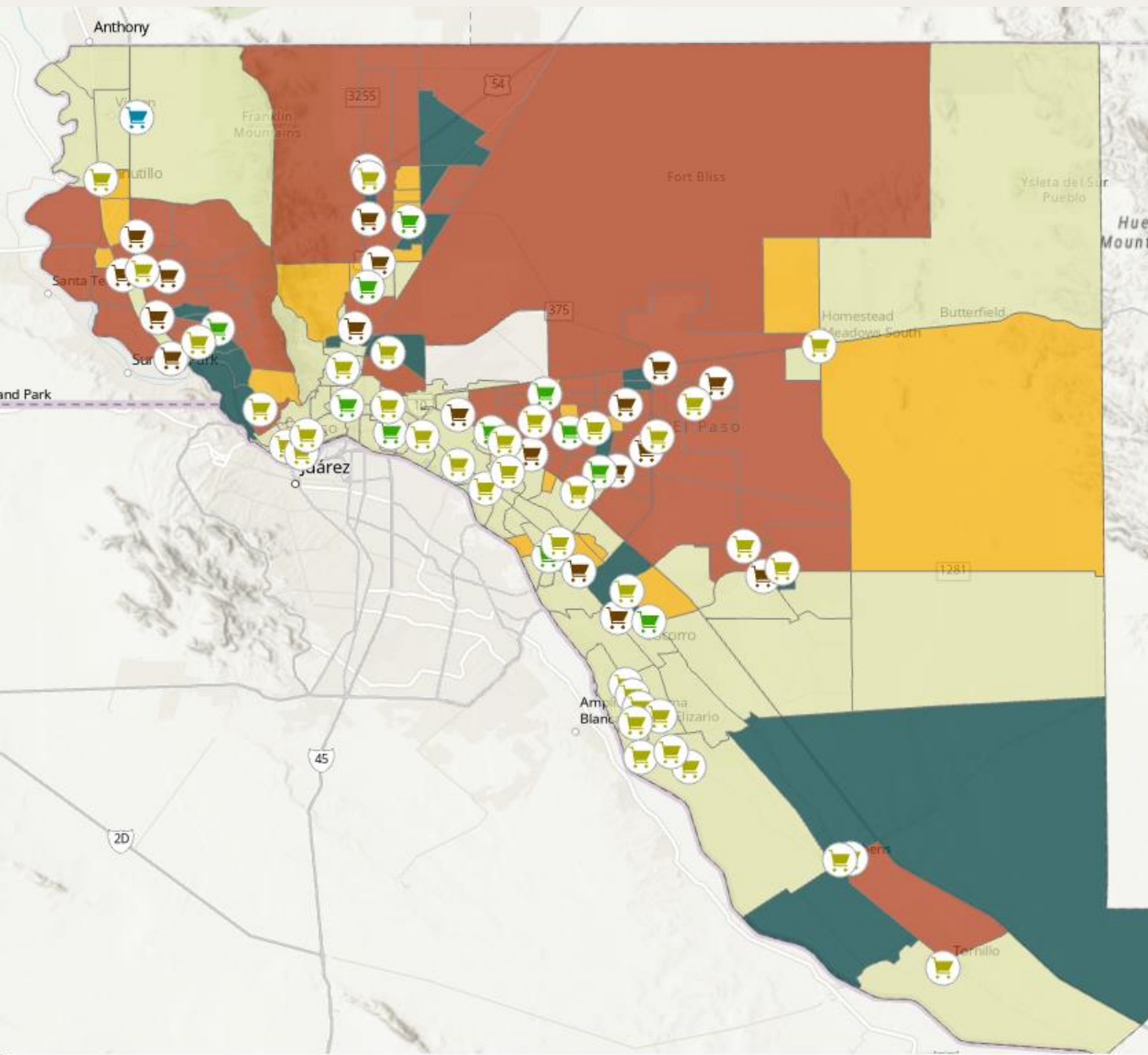
# Case Example: Type II Diabetes





Type II Diabetes and Income by  
Census Tract  
El Paso County, 2021-2023



# Case Example: Type II Diabetes

Type II Diabetes, Income, and  
Grocery Stores by Census Tract  
El Paso County, 2021-2023

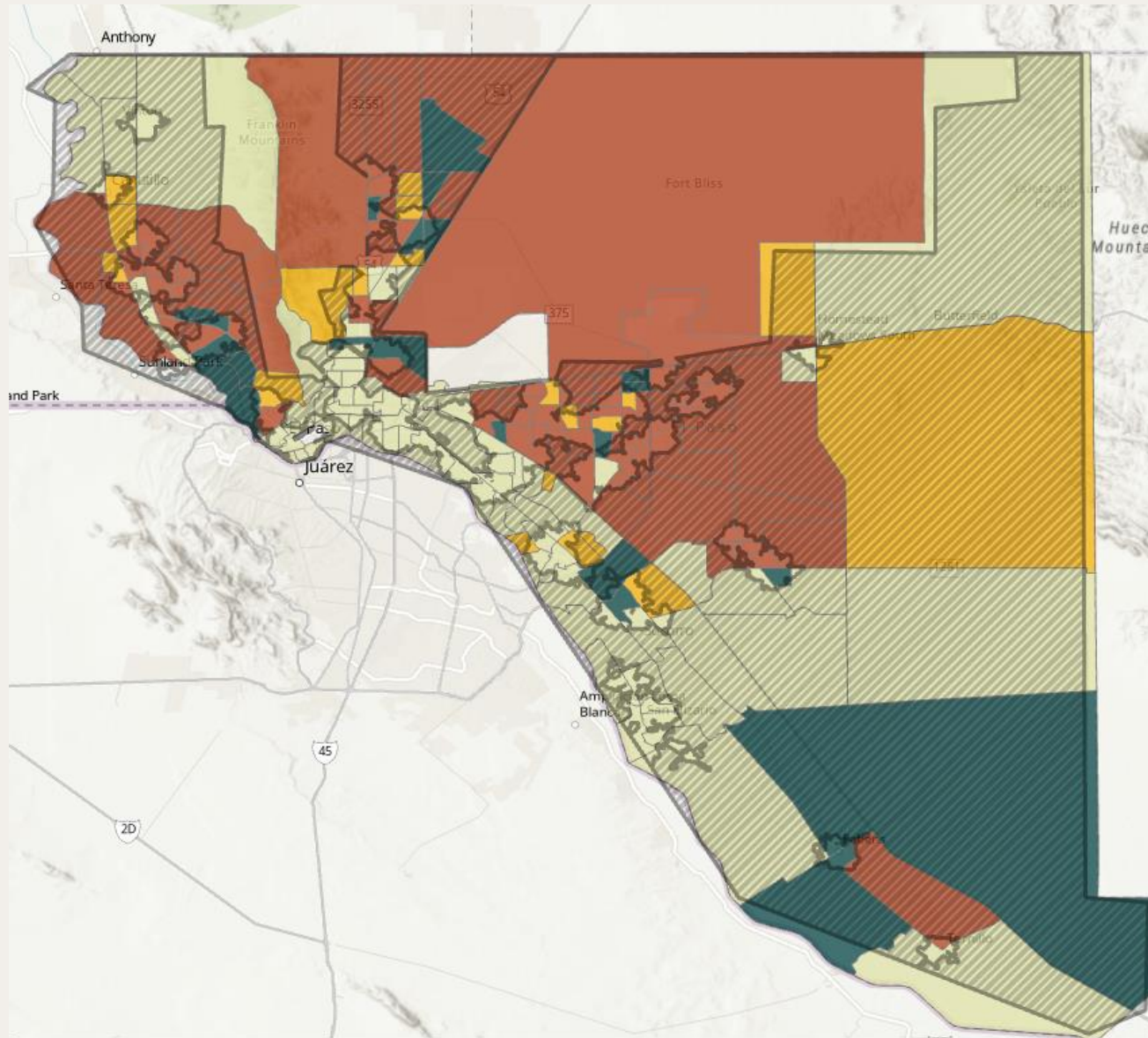


- Grocery\_Stores
-  Walmart
-  Food King
-  Westway
-  Minor Grocery Store



# Case Example: Type II Diabetes

Type II Diabetes, Income, and Food  
Deserts by Census Tract  
El Paso County, 2021-2023



Food\_Deserts



## Goal 2: Social Needs Screenings

- **Goal:** Collect screening data to identify social needs in different health care settings
  - Supports care coordination for individuals.
  - Supports analysis at the community-level.
- **Initiative:** Work with each partner organization to ensure that PHIX is receiving social screening results.

# Goal 3: Coordination and Referrals

- **Goal:** Support secure, electronic process for sending referrals and receiving closed-loop communication when the patient is seen. This system was developed with generous funding from the Paso del Norte Health Foundation.
- **Case Example:** The El Pasoans Fighting Hunger Food Bank has partnered with PHIX so providers can send closed-loop electronic referrals to their Food FARMacy.



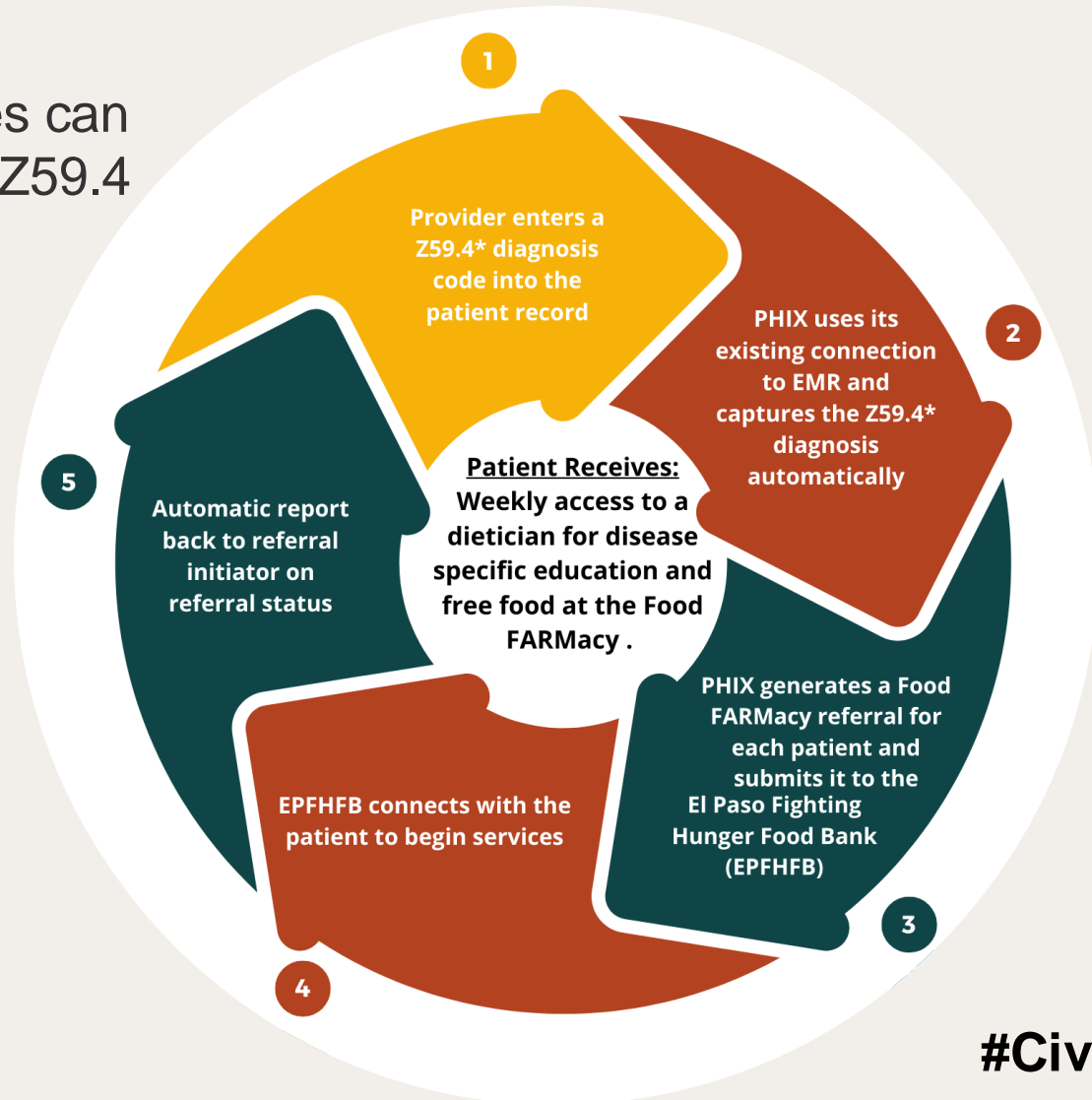




#Civitas2024

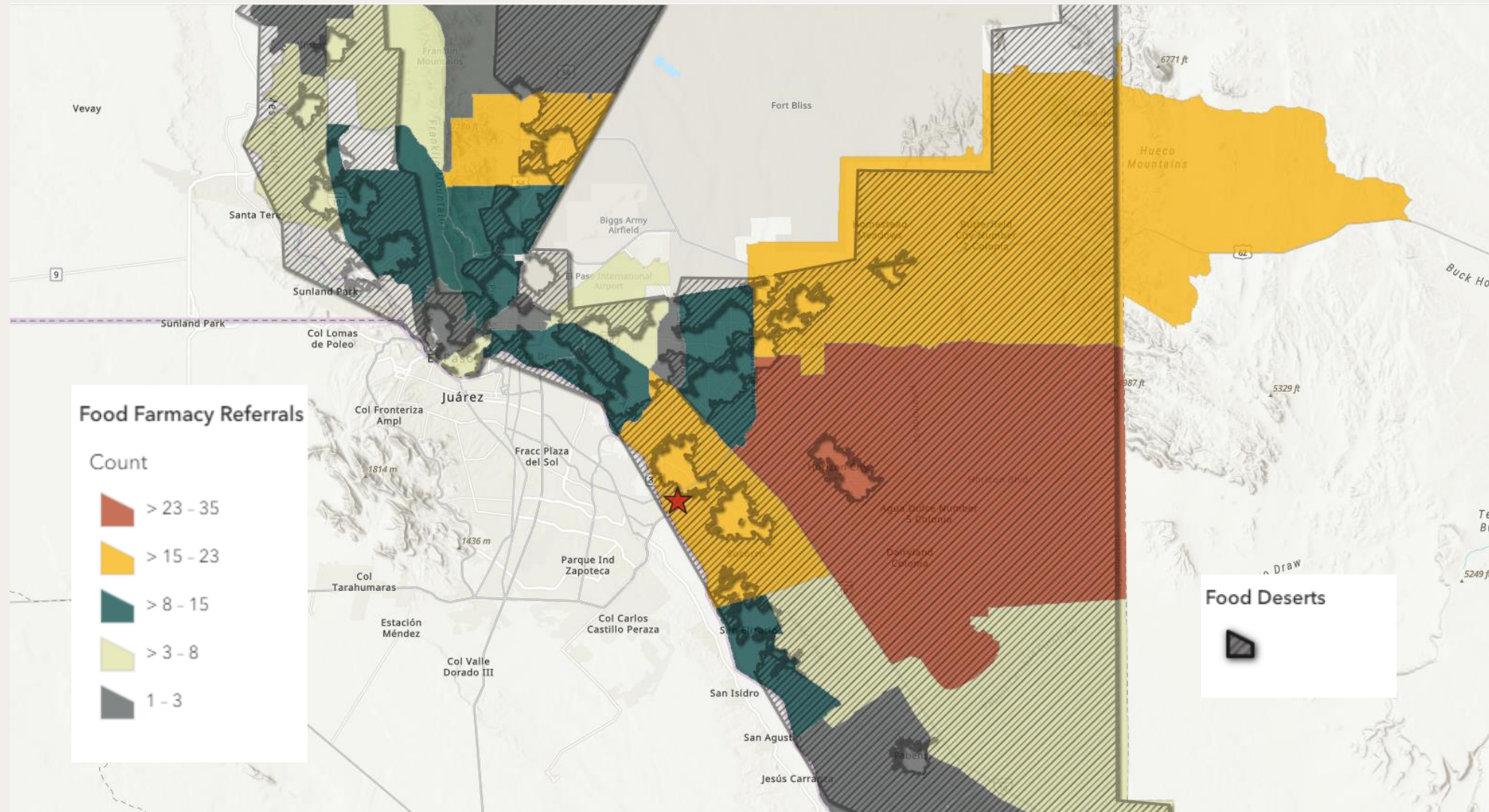
# Case Example: Food FARMacy Referrals

Social screening results and/or ICD-10 codes can initiate a Food FARMacy referral, including “Z59.4 Lack of adequate food”





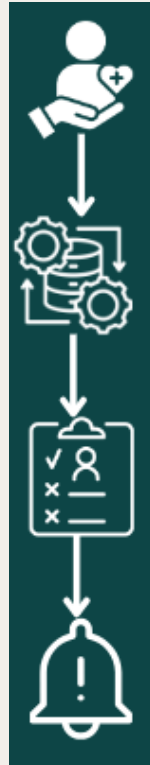
# Programmatic and Outcomes Analyses



# Goal 4: High Utilizers

- **Goal:** Identify individuals that leverage a higher number of services across sectors.

- **Case Example:** Senior Falls Initiative



EMS called to transport patient for fall and patient treated in Emergency Department.

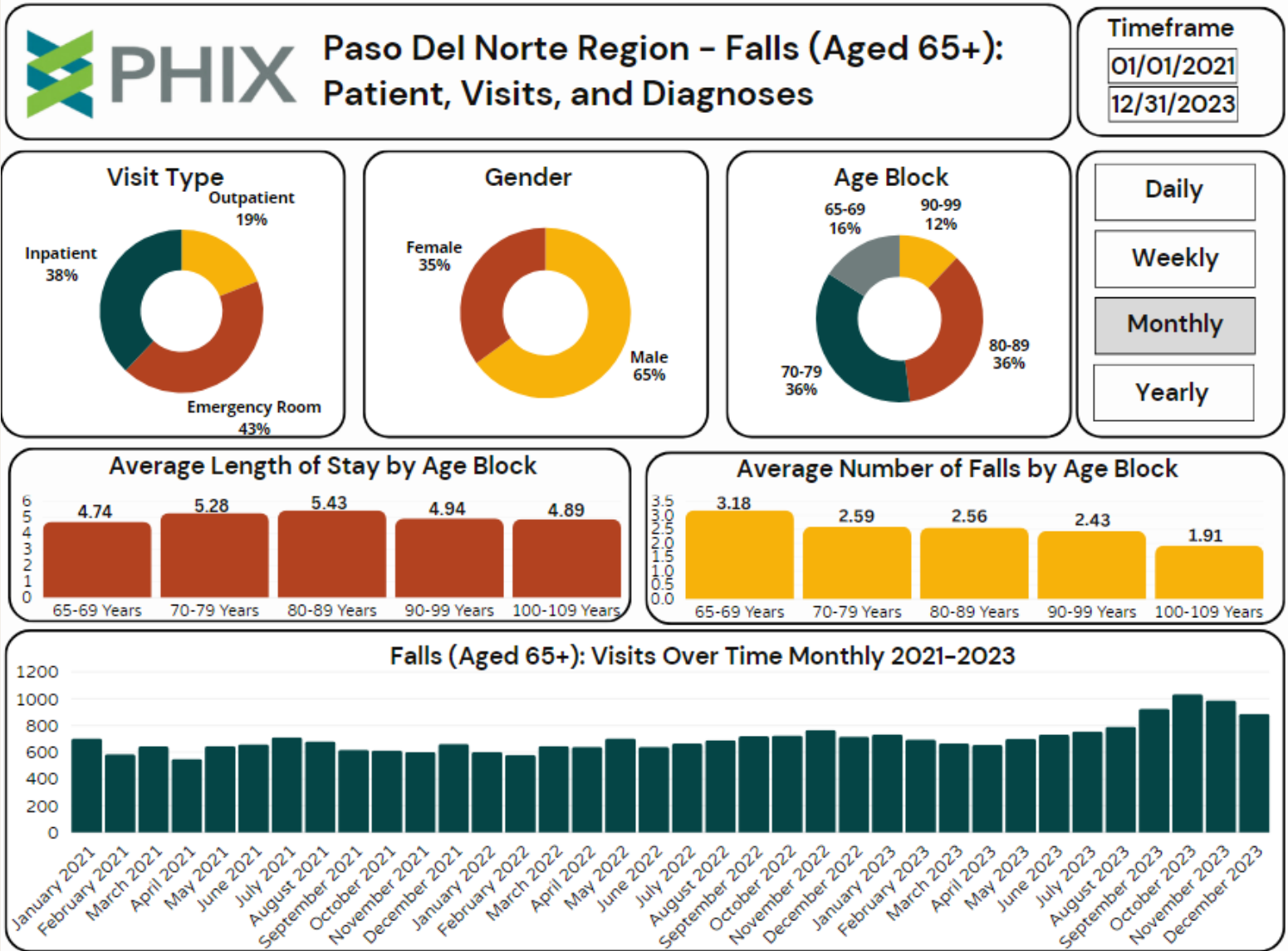
PHIX processes EMS and hospital data to identify patients aged 65+ who were transported by EMS for an initial fall who meet criteria for the program.

Patients enrolled by Mobile Integrated Health (MIH) in the fall prevention program and receive in-home fall prevention support.

PHIX provides notifications to MIH of future admissions for participants.

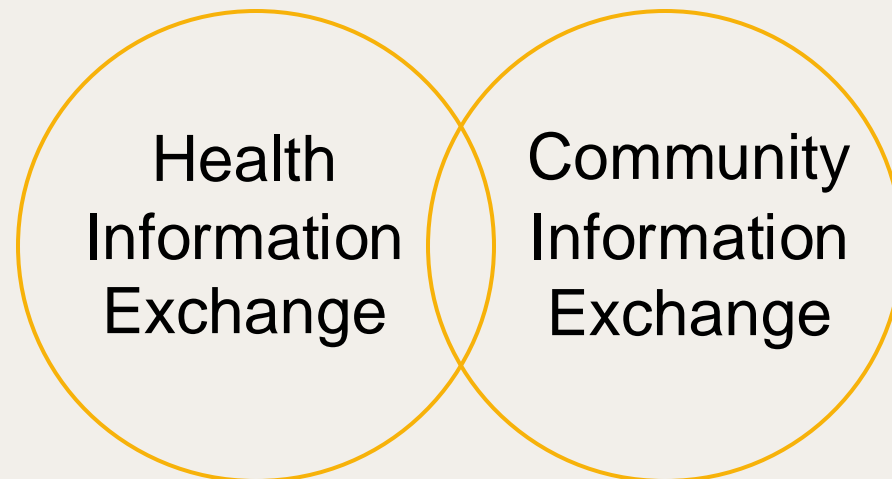
**#Civitas2024**

# Case Example: Senior Falls



# Goal 5: Holistic Care

- **Goal:** Support sharing information within and across sectors at the individual level.
- **Case Example:** Developing electronic system and legal framework to support collecting and sharing health screenings for migrant population.



# Evolution to Health Data Utility

NMDOH Committee  
has established  
strategic need for  
regional data sharing  
across sectors

**Health Data  
Utility (HDU)**

Embracing transition  
from regional HIE to  
HDU with service area  
across state borders



# Questions?





# Thank you!



Emily Hartmann  
Executive Director  
[ehartmann@phixnetwork.org](mailto:ehartmann@phixnetwork.org)

Juan Nanez, MPH, BSN, RN  
Director of Programs  
[jnanez@phixnetwork.org](mailto:jnanez@phixnetwork.org)

[www.phixnetwork.org](http://www.phixnetwork.org)

