

# Driving Collaboration and Cross-Sector Data Sharing with a Community Information Exchange



Camey Christenson  
Waldo Mikels-Carrasco

*Tuesday October 15, 2024*



# MEET THE PRESENTERS



**Waldo Mikels-Carrasco**

Director, Center for Health Information  
Sharing & Innovation

Co-Director, Data Across Sectors for  
Health (DASH)

**Camey Christenson, MSW**

Chief Business Development Officer

**#Civitas2024**

# LEARNING OBJECTIVES

- 1) Present the Community Information Exchange (CIE) model, including its core tenets of equity and antiracism, foundational elements of community stewardship, person-centeredness, multi-level impact, and core functionalities.
- 2) Explore early planning and design challenges, considerations, and opportunities for developing a regional CIE, including community engagement, shared governance, human-centered design, and technology and data infrastructure issues.

**#Civitas2024**



- Nonprofit organization
- San Diego County Region
- Maintains free online searchable database of trusted, free or low-cost health and social services
- Listed services are categorized by 211 Human Services Indexing System (211HSIS.org)
- Operates a multilingual contact center available 24 hours a day
- Information & referral services are provided in alignment with Inform USA standards
- Approx. 200,000 unique clients served annually
- Documented community needs and referrals
- Access to CIE for care



- Nonprofit Initiative/Program of 211 San Diego
- Ecosystem of multidisciplinary network partners
- Integrated technology
- Including 211 San Diego's Resource Database
- Shared language using Comprehensive Social Continuum Assessment which captures actionable social services information
- Fosters collaboration across networks – community care coordination
- Whole person/person-centered care
- Goal is to improve health and wellness for individuals, systems, and populations



- Nonprofit organization
- Subsidiary of 211 San Diego
- San Diego and Imperial County's Health Information Exchange
- Qualified Health Information Organization (QHIO), helping California healthcare providers comply with the CalHHS Data Exchange Framework (DxF)
- FHIR-enabled interoperability platform
- Efficient, interconnected, and patient-focused
- Reduced interface costs for organization
- Improved care coordination
- Timely access to records for physicians

**#Civitas2024**

# 211 SAN DIEGO AND CIE



## GENERAL LINE

- 24/7 contact center
- 10-minute information and referral
- 300+ languages
- Use CIE to document all interactions with callers and consent into CIE
- CRM integrated with CIE platform

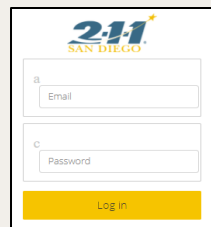
## CARE COORDINATION

- Specialty line with case management
- Contracted partnerships with Managed Care Plans (MCPs)
- In-depth assessment and coordinated referrals via the CIE
- CRM integrated with CIE platform



Community  
Information  
Exchange

Connect to 137+ organizations through direct system access and leveraging data integration between systems



CIE Network  
Partners

## Individual User Access

- Secure login
- Individual level PII & CIE profile, Screenings, Assessments, Comprehensive Social Continuum Assessment (CSCA)
- Electronic Referrals

## System to System Integration

- Secure member matching
- API connections
- Eligibility prioritization

#Civitas2024

# ILLINOIS PUBLIC HEALTH INSTITUTE CHICAGO REGIONWIDE CIE



The CIE will function as a network of health and social service organizations and agencies that develop shared governance to support the improved care-coordination across multiple sectors, allowing participating providers to deliver more responsive, more effective community care planning for people who face multiple, often related, challenges (for example, food insecurity, unstable housing, and access to health care).

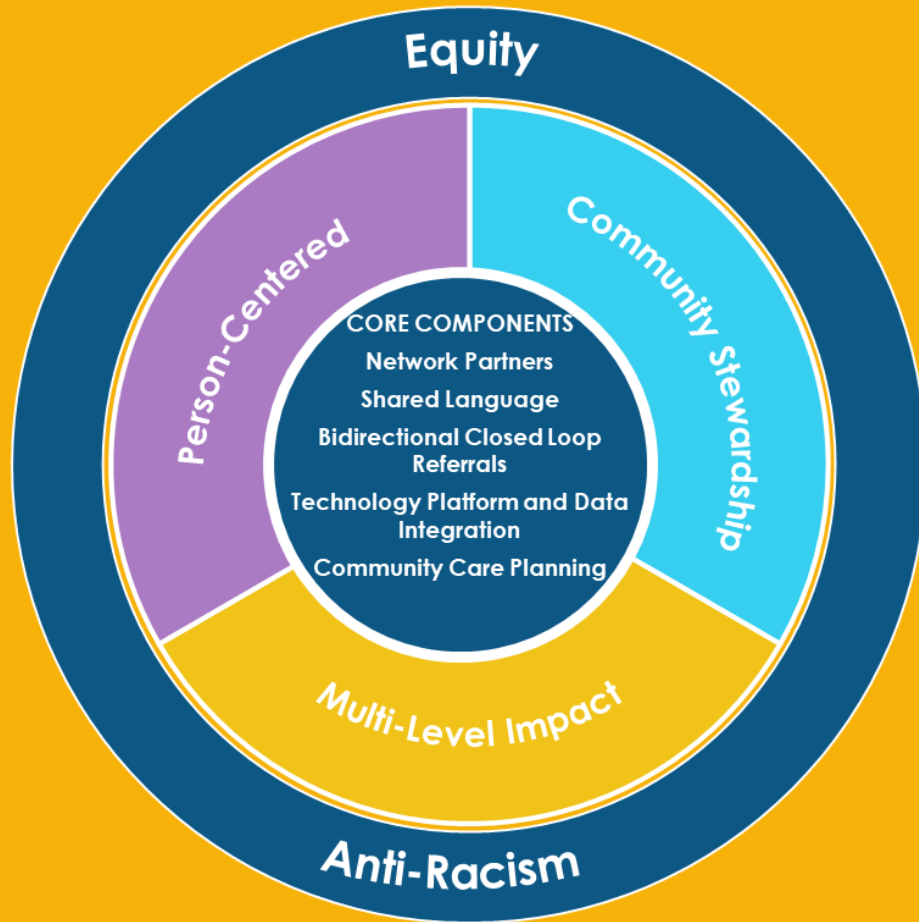
**#Civitas2024**



# COMMUNITY INFORMATION EXCHANGE (CIE) MODEL



# CIE DEFINITION



*"A CIE<sup>®</sup> is a **community-governed infrastructure and ecosystem** that enables information to be effectively and responsibly shared among many organizations, using different, **interoperable technologies**, in support of **holistic coordination of care and equitable systems change**. Specifically, a CIE enables the sharing of data among multiple kinds of stakeholders – such as providers who need to share data to provide more holistic care, people in need who must navigate complex systems of care, and researchers and decision-makers.*

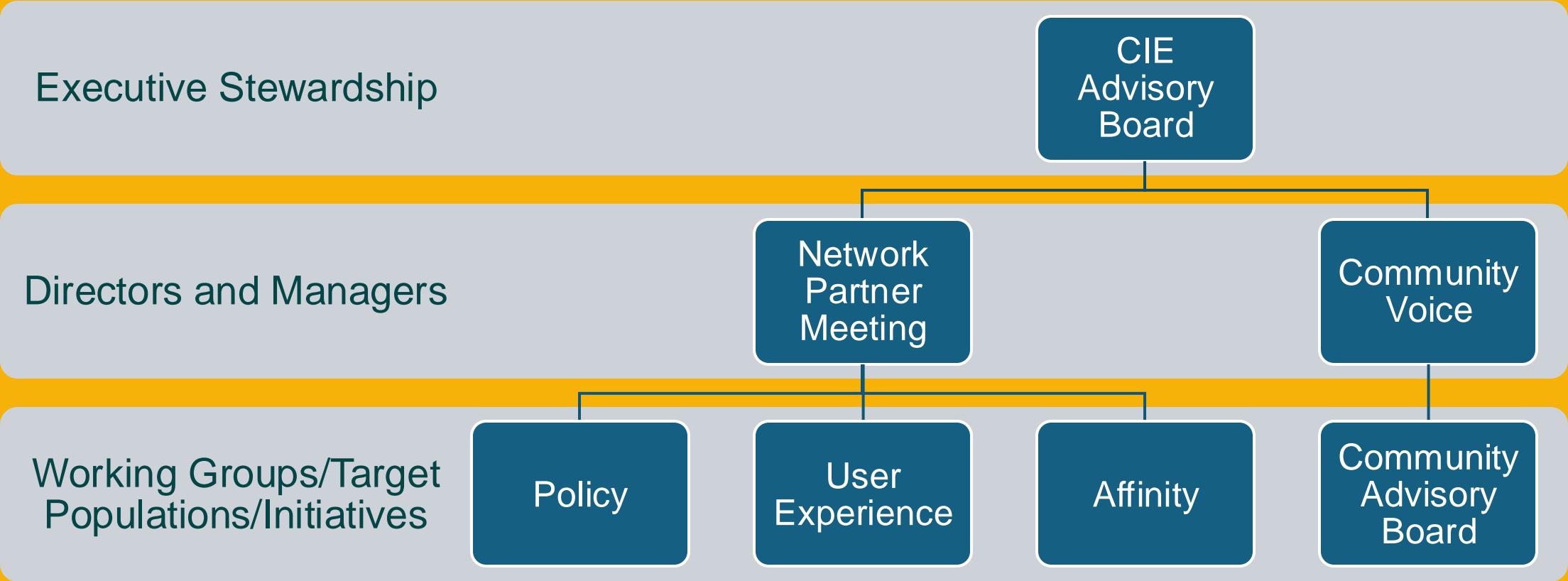
*As critical infrastructure that supports many stakeholders, using many different technologies, a CIE can enhance understanding of individuals' and communities' needs, improving service accessibility, service outcomes, and the health and well-being of a community." #Civitas2024*



# STEWARDSHIP FRAMEWORK



## Community Voice-Community Members



#Civitas2024

# BENEFITS OF A CIE

## Micro (Family & Individual)

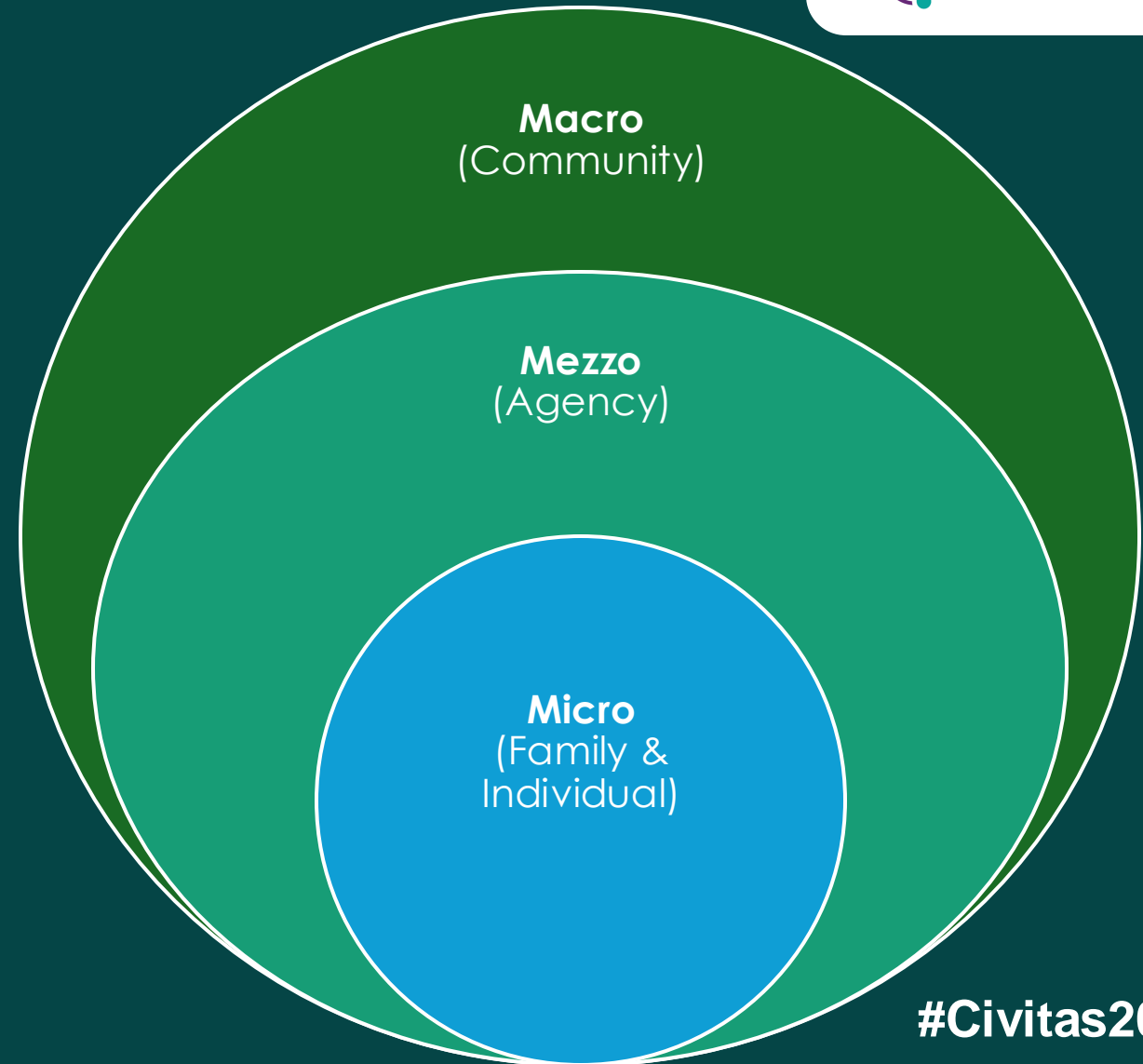
- Informed and Tailored Services
- Proactive Engagement

## Mezzo (Agency)

- Bridges sectors
- System Efficiencies
- Shared language and outcomes

## Macro (Community)

- Data that Speaks
- Unmet Needs and Barriers
- Access Disparities



# CIE IMPACT: CASE STUDIES



Homeless and  
Older Adult Cohorts

## Notifications

Reduction in EMS  
Transports =  
Cost Savings

**42% Reduction in  
EMS Transports**

At-Risk Homeless Adults  
Receiving One Time  
Prevention \$

## Shared Screening and Coordinated Referrals

Cost Saving and  
Reduced Risk of  
Becoming Homeless

**24% Reduction and  
7x Less Likely to  
Become Homeless**

Hospital Discharge  
Patients with  
Transportation Need

## Closed Loop Referral

Hospital Readmission  
Reduction

**10% Reduction in  
Hospital Admissions**

**#Civitas2024**



# DEVELOPING A REGIONAL CIE: PLANNING & DESIGN PHASE



# PARTNERSHIP



COOK COUNTY  
BUREAU OF  
ECONOMIC  
DEVELOPMENT



## CIE Support of Initial Use Cases

- Help find missing clients when beds become available
- Use prior service utilization records to confirm client eligibility
- Increase efficiency of intake screening and workflows

**Entering Shelter-based or Respite Care**

### Care Coordination

- Safe, secure, two-way data-sharing integration
- Coordinate and build on each other's care plans
- Coordinated client consent

- Identify available units
- Coordinate continuation / transition of care
- Provide complete, necessary data
- Track outcomes

**Transitioning to More Stable Housing**

#Civitas2024

# IMPLEMENTATION & SUSTAINABILITY TIMELINE

## 2023-2024 Planning & Design

- Environmental Scan conducted
- Stakeholder Workgroups convened
- Use cases co-designed by workgroups & CIE partner organizations
- Technology vendor procurement

## 2026 Robust CIE Operational

- Initial Use Cases evaluated & refined
- New Uses Cases added
- Expand network of partner organizations
- Initial impact data analysis
- Launch Financial Sustainability Plan

- Pilot sites contracted
- Technology solution, Legal & Consent models implemented
- Initial Use Cases implemented
- Governance structure expanded

## 2025 CIE Build & Implementation

- New Uses Cases added
- Expand network of partner organizations
- Impact data reports
- Expand Financial Sustainability

*Funding: Robust mix of public & private sources that may include: Cook Co. Equity Funds, health systems subscriptions, Medicaid reimbursement, philanthropic support*

## 2027 & Beyond



#Civitas2024



COOK COUNTY  
BUREAU OF  
ECONOMIC  
DEVELOPMENT



# DEVELOPING A REGIONAL CIE

## WORKGROUPS

- Pilot Planning
- Legal & Governance Framework
- Technology & Data Standards
- Business Model & Sustainability Strategy

#Civitas2024

# JOIN THE CIE NATIONAL MOVEMENT



## *CIE National Membership Benefits:*



Broad recognition as a CIE Ambassador on our website and in our communications materials



Priority registration and discounted rates for annual events



Access to quarterly CIE Networking activities and new resources



Opportunity to collaborate with the CIE National Team on advocacy efforts and joint funding opportunities



Members-only networking event during annual events

Learn More on CIE National Membership



Contact us: [CIE@CIESanDiego.org](mailto:CIE@CIESanDiego.org)

#Civitas2024

Community Information Exchange® and CIE® are registered trademarks of 211 San Diego.



# CIE CONSULTING



## *CIE National Consulting Topics:*

- Data Equity Framework
- Shared Governance and Community Stewardship
- Multi-Level Impact and Systems Change
- Engaging Community Voice
- Cultivating Network Partners
- Bidirectional Information sharing
- Data Exchange, Collection, and Use
- Business and Legal Frameworks for Data Use Agreements
- Data Analytics
- Community Care Planning
- CalAIM
- Consent Management Services

**Get Started with Consulting from the 211/CIE San Diego Team**



# CHECK OUT OUR AGENDA!

## SCAN

